

HiLog

User manual

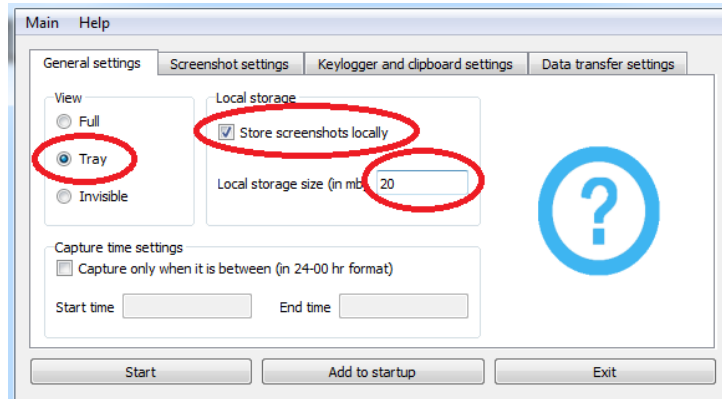
1. Quick start	2
2. General settings	4
3. Screenshot capture	5
4. Key and clipboard capture.....	6
5. Data transfer	7
5.1. FTP.....	7
5.2. Email.....	8
5.3. Local	9
6. Other features.....	10
6.1. Password settings	10
6.2. Automatic uninstall.....	11
6.3. User privileges	11

1. Quick start

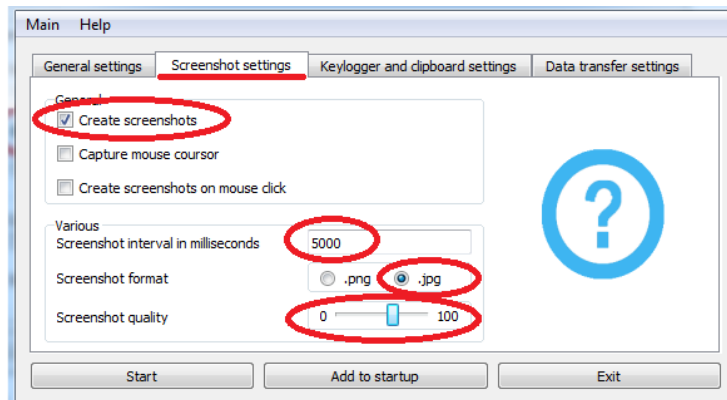
1.1. After installation start application with administrative privileges and evaluate trial or register.

1.2. Set View in general settings to “Tray”

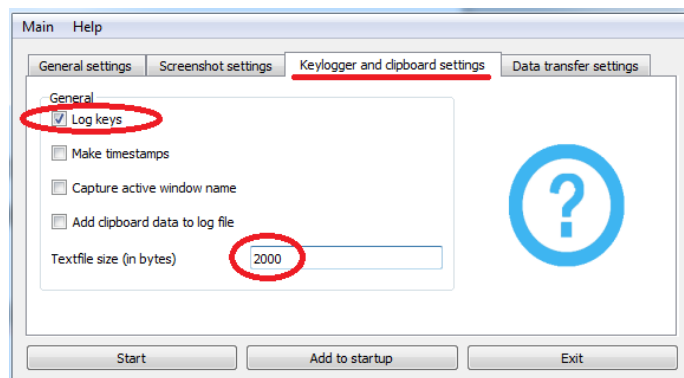
1.3. Check “Store screenshots locally” and set “Local storage size” to 20



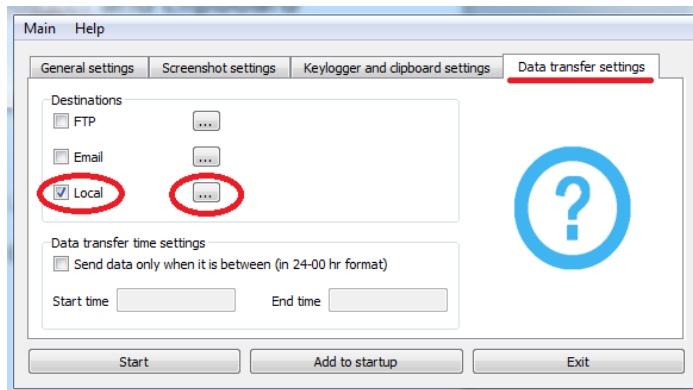
1.4. If you need to capture screenshots – check “Create screenshots” in “Screenshot settings”. After that, set screenshot interval to 5000 (5 seconds), set screenshot format to “.jpg” and screenshot quality to 50-70.



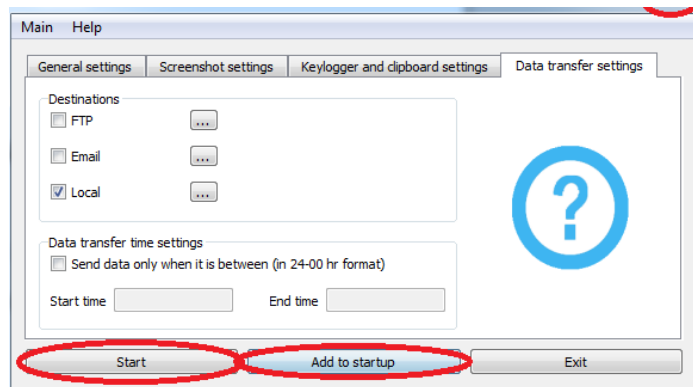
1.5. If you need to log keys – check “Log keys” in “Keylogger and clipboard settings” and set textfile size to 2000.



1.6. In “Data transfer settings” tab, check “local” and specify path by clicking on the button near the “local”.

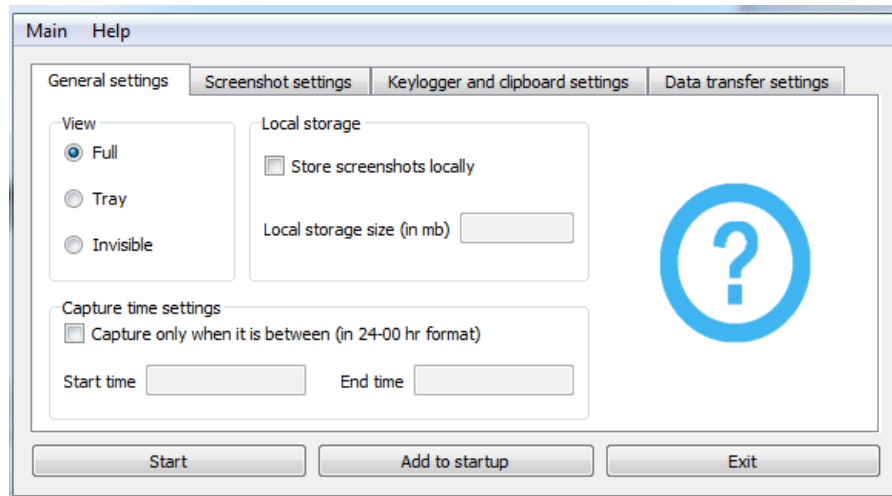


1.7. Press “Add to startup”, press “Start” and hide the application by clicking the “hide” button on the top-right corner of the application (not by clicking “Exit” button).



1.8. It's done

2. General settings



In this section you can specify:

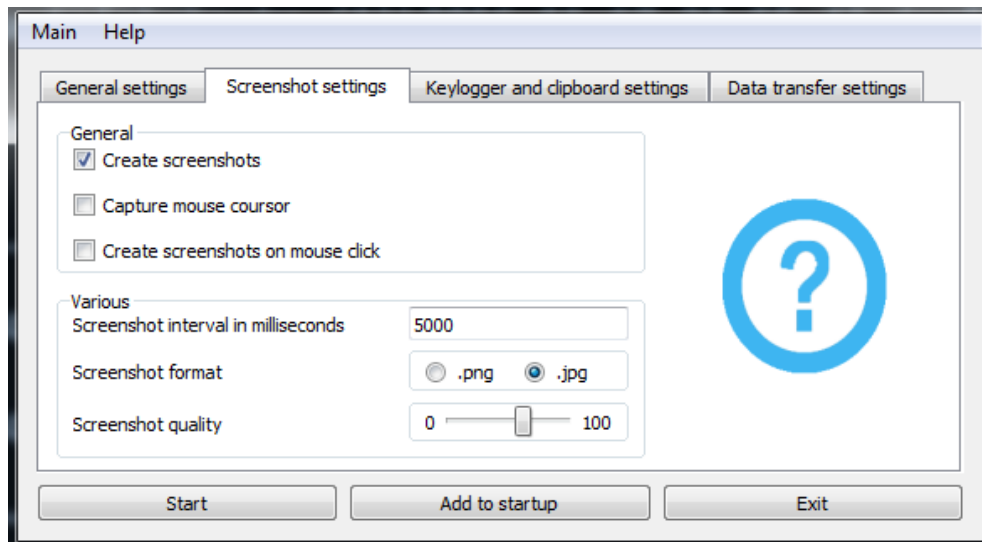
The view in which the application will be opened next time

- Full view – the application will be opened showing its main window.
- Tray view - the application will be opened showing only its tray icon (you can open full view from there).
- Invisible view – the application will start hidden. The only way to see the main window after that is to run application executable with the key “visible” (cmd LLDataProvider.exe visible)

Local storage size. In case of internet malfunction you can set big local storage size to store capture data and avoid its loss.

Capture time. If you need to capture data only in specific hours you can set it here.

3. Screenshot capture



In this section you can specify:

Mouse cursor capture. Mouse cursor can be captured.

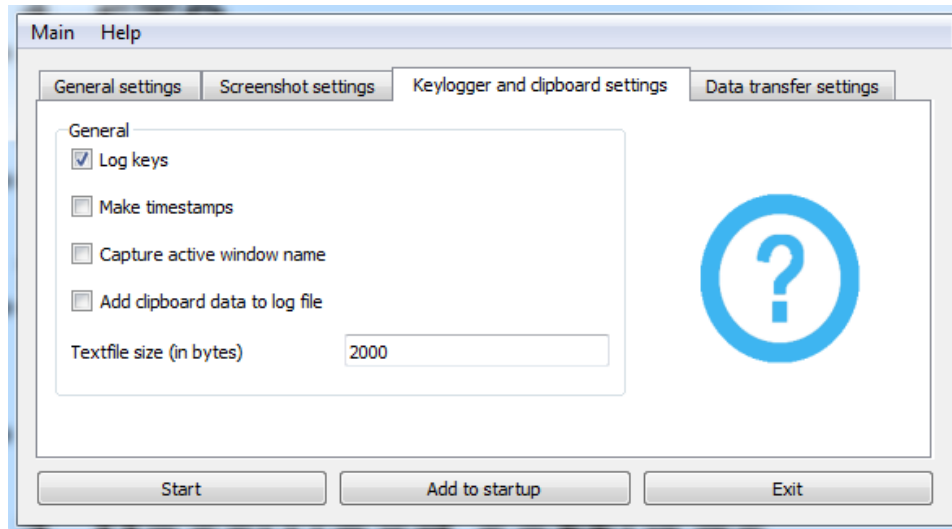
Screenshots on mouse click. When user makes a mouse leftbutton-click, the screenshot will be made.

Screenshot interval. In basic scenario screenshots will be made with some time interval – set it here (1000 ms = 1 second)

Screenshot format and quality. .png or .jpg. PNG have better quality, but in JPG case you can choose its quality and get lesser size.

NOTE: Screenshots won't be captured in the applications that are using DirectX (games, etc.)

4. Key and clipboard capture



In this section you can:

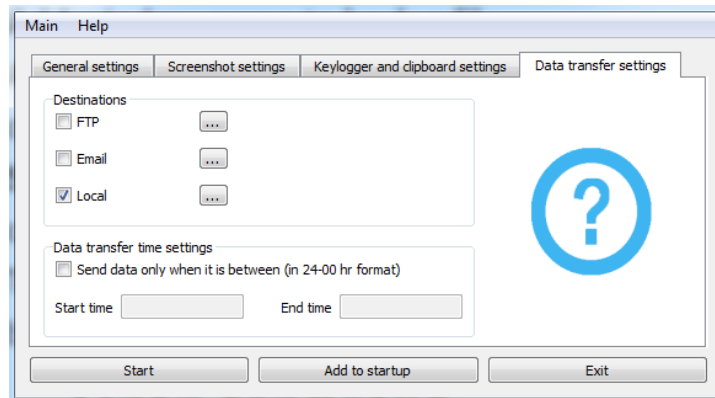
Add timestamps to keylog file.

Add window name to keylog file.

Add clipboard data to keylog file. Only two data types will be added – text data (if user copy text data), and file lists (if user copy files)

Specify textfile size. Keylog file will be copied to your destination in three cases. First – if user turns off his PC. Second – when the application starts. Third – if keylog file exceeds its limits. Reasonable file size is around 2000 bytes, but you can choose it depending on your own experience.

5. Data transfer

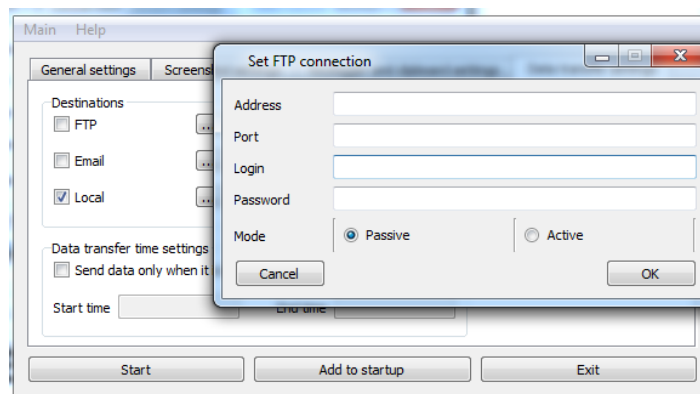


In this section you can:

Set data transfer time. If you need to send captured data only in specific time periods – set it.

Set destinations where your capture data will be stored

5.1. FTP



For correct work

Set address (localhost, 127.0.0.1, ftp.myftp.com).

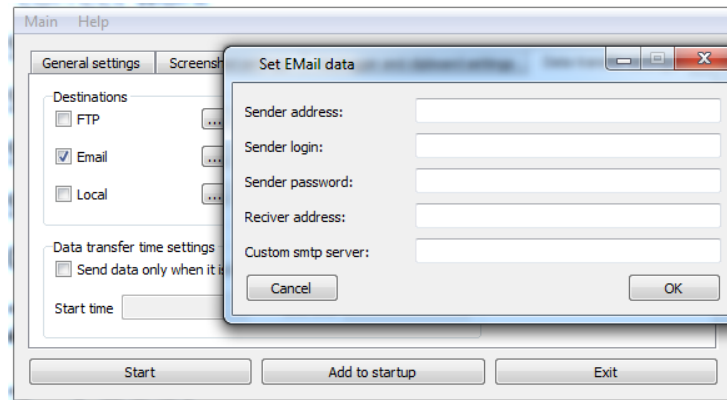
Set port (21 if blank).

Set login (mylogin).

Set password (mypassword).

Chose mode (passive is default).

5.2. Email



For correct work

Set sender address (sendermail@sender.com).

Set sender login (mylogin).

Set sender password (senderpass).

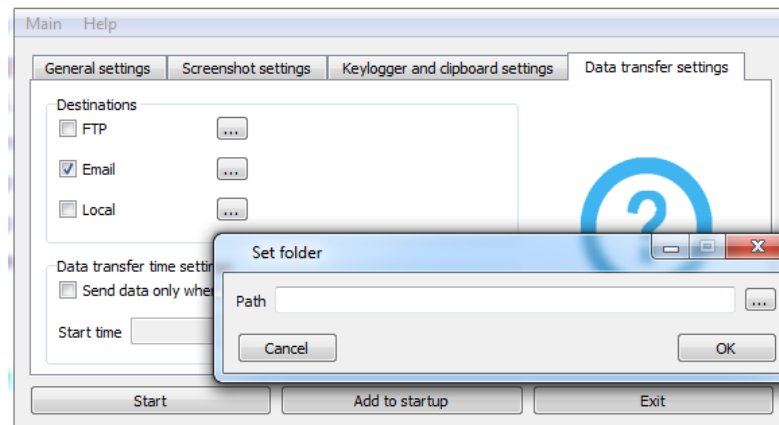
Set receiver address (receiver@receiver.com).

Set custom smtp server (smtps://smtp.address.com:port). You don't have to set smtp server for common email providers such as gmail.com, outlook.com, hotmail.com, yahoo.com, inbox.ru, mail.ru, yandex.ru. But in other cases, you have to set it.

NOTE: Some email providers require additional settings to use their smtp servers. Visit <https://support.google.com/a/answer/176600?hl=en> for Gmail, or try to find correct how-to for your email provider

NOTE: Only keylogs will be sent via Email, due to the big size and amount of screenshots

5.3. Local



For correct work

Set path to local storage. Works with LAN folders and local PC folders

6. Other features

There is a several other features worth mentioning.

- For correct application start on PC startup, you need to press “Add to startup” button. If the application is already added to startup, the same button will allow you to remove it from startup.
- To start capture, you need to press “Start” button.
- “Exit” button in lower-right corner of the application saves settings and closes the app.
- You can choose language in Help->language menu. Only English and Russian translations are available for now.
- Trial period works for 36 hours. After that, you’ll need to purchase this application, otherwise it will stop working.
- During install you can check “Remove from «Programs and components» list” box. It will cause removal from Control panel->Programs and components list to provide more privacy.
- You can set several destinations at the same time (FTP and Local for example).
- Clicking on “Add to startup” button will add this application to startup for all users of the PC. If you need to capture data only from specific user – add the application to this user startup manually (for example, by adding shortcut to LLDataProvider.exe to user “Startup” folder in Windows 7).
- Some email services could incorrectly identify mail attachment encoding. In such case you should download attachment to your PC and open it with WordPad (Notepad incorrectly represents tabulation).

6.1. Password settings

In Main->Password menu you can set password for access control and encrypted data of this application. Access control prevents anyone else except you to open main window of the application. Encrypted data contains capture data destinations and credentials.

6.2. Automatic uninstall

In Main->Auto uninstall settings you can set time and date when HiLog will delete itself.

6.3. User privileges

To change application settings you need to have an administrator rights (however, program does not require such rights to work after settings are set). In case if UAC is turned off and user doesn't have administrative privileges and "invisible" view is turned on you won't be able to change its settings. To change settings in such case you will need to login with user that have administrative privileges.